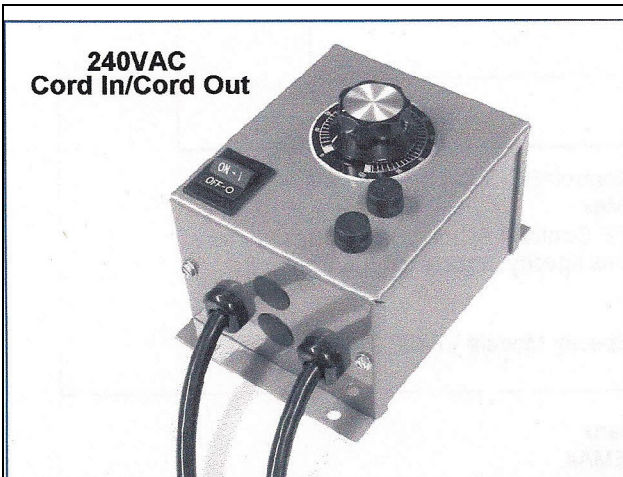


# SR100 SERIES

## VIBRATORY FEEDER CONTROLS

### FOR BOWL FEEDERS, INLINE TRACKS, AND SUPPLY HOPPERS



#### DESCRIPTION

The basic SR100 vibratory feeder control is designed for highest quality, performance, and reliability. Options are added only as required to maintain a very competitive price structure. Standard features include: 60/120 PPS conversion, hopper interlock to prevent bowl overflow and a starting voltage trim adjustment. All SR100 models can be used with the EDR Electronics model FC1000 parts sensing feeder control. This combination provides totally coordinated operation of feeder bowl, supply hopper, and inline track. Standard outputs are 0 to 120V or 0 to 240V with current ratings to 40A. 120V controls are supplied complete with 3 wire line cord, grounded outlets, fuse, and ON/OFF switch. The dual output control consists of two variable power controls and two grounded outlets in the same size enclosure. Each control is rated at 8A maximum and combined current should be less than 15A. Enclosures are heavy gauge steel with baked enamel finish to withstand vibration and severe industrial environments. This two piece general purpose enclosure slips apart with no cables between the cover and machine mounted base.

#### OPTIONS

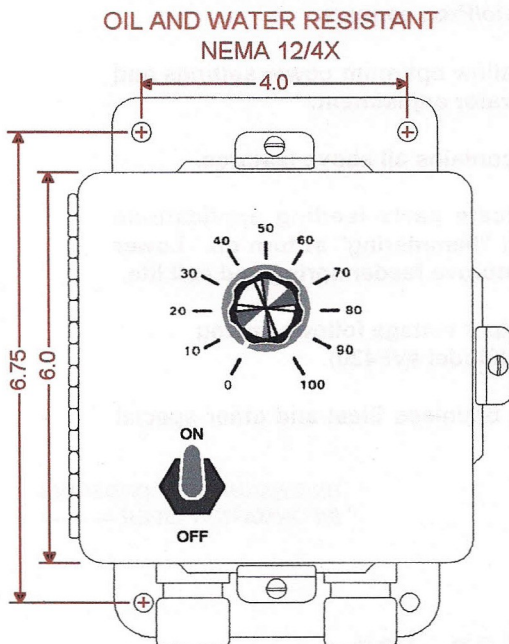
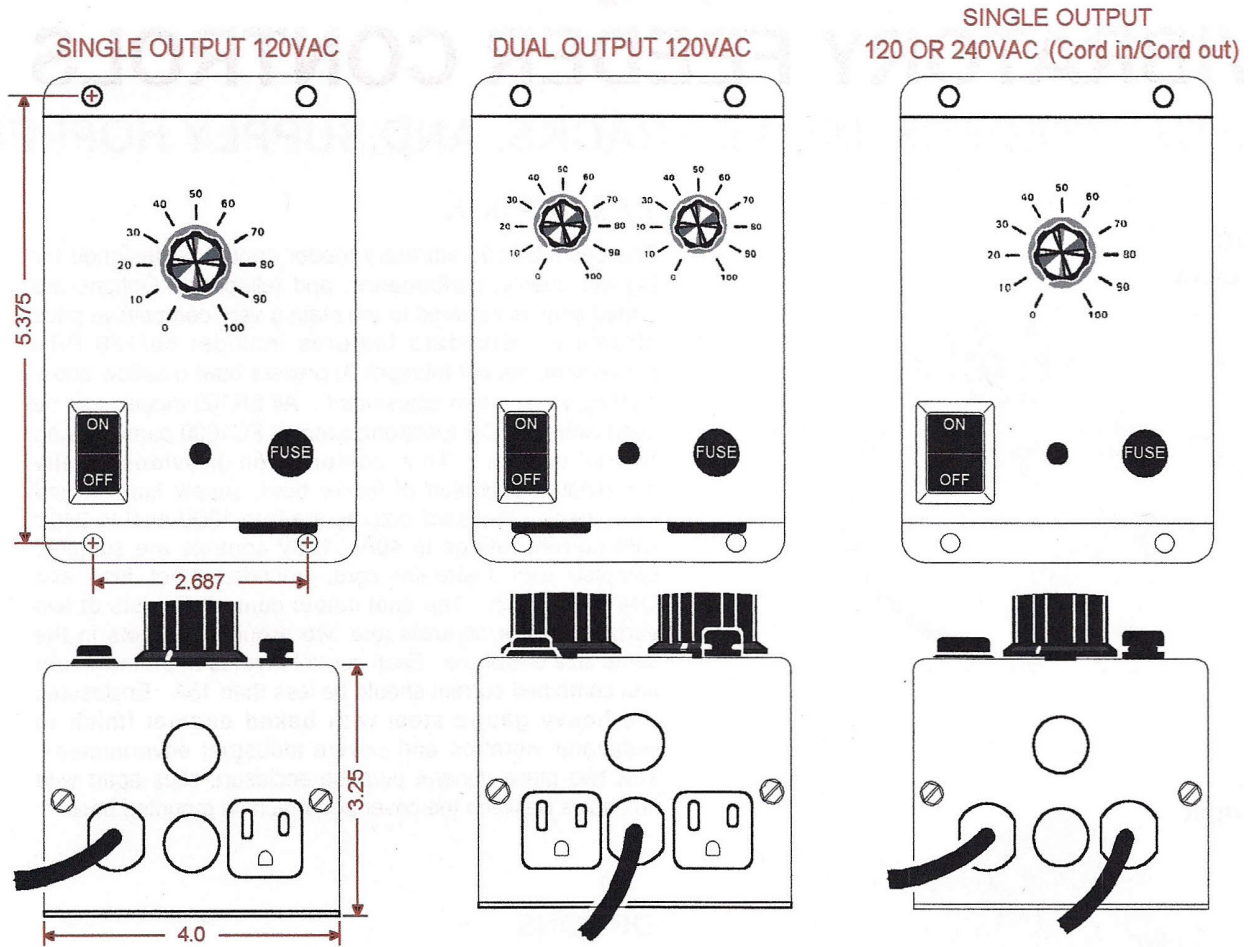
- P.C. Input option accepts 5-30VDC ON/OFF control signal from programmable controllers, photoelectric, and proximity sensors.
- A.C. Input option accepts 100-240VAC on/off control signal from AC Photo/Prox sensors.
- Min/Max trim pots allow optimum power settings and limits machine operator adjustment.
- Model SR100 Plus contains all above features.
- Soft Start for delicate parts feeding applications eliminates loud coil "hammering" at turn on. Lower power surge may improve feeder spring and coil life.
- Signal following output voltage follows analog 0 -10VDC or 4-20mA (Model #VF420).
- NEMA 4, NEMA 12, Stainless Steel and other special enclosures.

DIMENSIOS AND ORDERING  
INFORMATION OVER.....

#### EDR Electronics, Inc.

1504 E. Algonquin Road  
Arlington Heights, IL 60005  
Tel. (847) 640-6996 Fax. (847) 640-9717

# SR100 GENERAL PURPOSE ENCLOSURES



## ORDERING INFORMATION

**SPECIFY:** SR100 -8 - 120V

**CURRENT:** \_\_\_\_\_

8, 15, \*25, \*40a

**LINE VOLTAGE:** \_\_\_\_\_

120 or 240VAC

**OPTIONS:** \_\_\_\_\_

5-30VDC ON/OFF Control = PC (N.O.) or PC (N.C.)

Min/Max Trim = Min/Max

100-240VAC ON/OFF Control = AC (N.O.) or AC (N.C.)

For all 3 above options specify Model# SR100 Plus.

Dual Output = Dual

Soft Start = SS

Signal Following = Specify Model# VF420

**ENCLOSURE:** \_\_\_\_\_

General purpose = Blank

Specify NEMA12, NEMA 4,

Stainless Steel, etc.

Cord in/Cord out = C/C (std on 240VAC models)

NOTE: \*25, 40A controls are supplied in NEMA 4/12 enclosures.